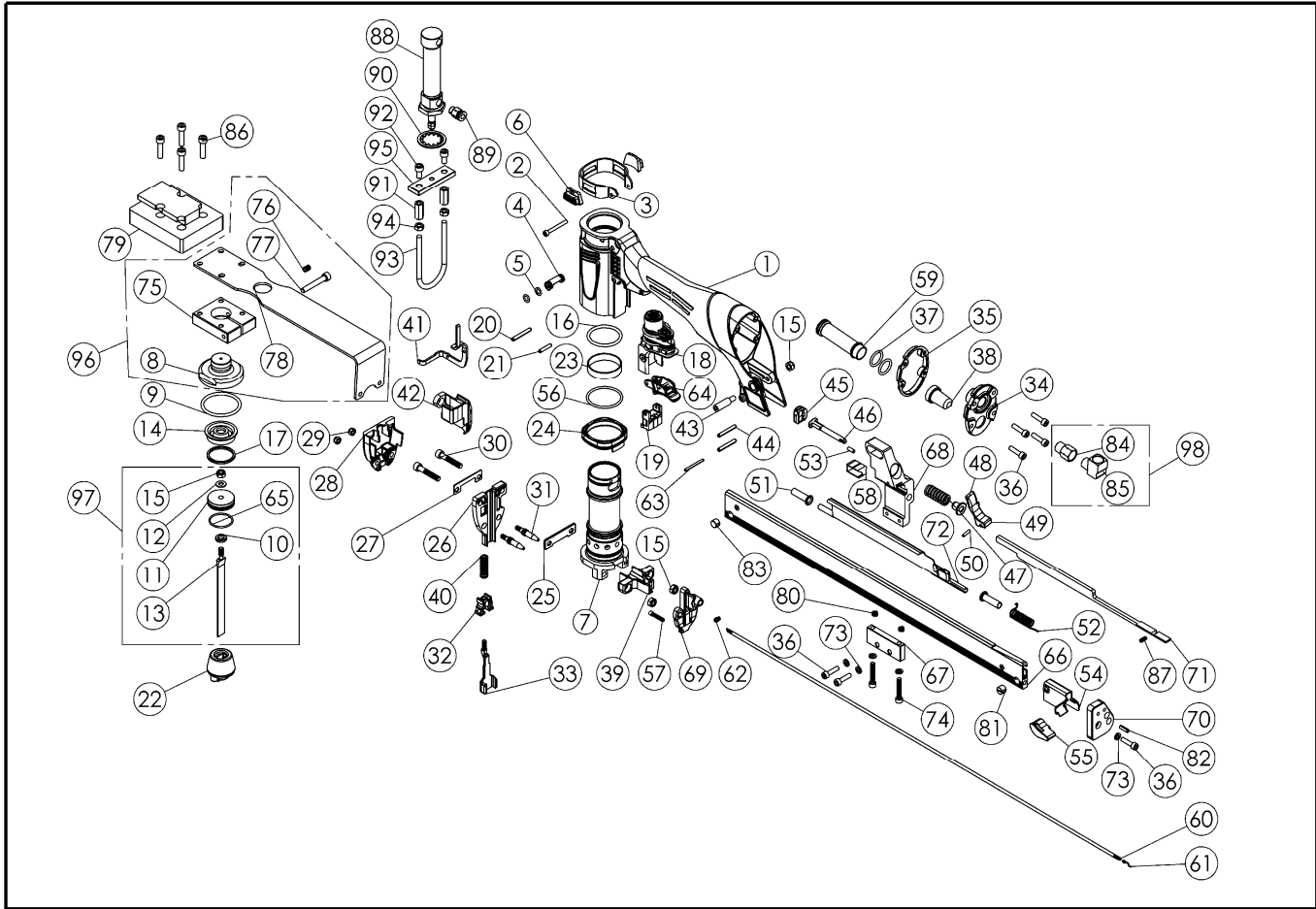


**PARTS LIST / SCHEMATICS, MODEL NUMBER : SN412S4LM**

**NOTE : When ordering spare parts. Please state the part name and part number. ★ : Suggested wearing parts.**



SN412S4LM.A02 | A | 2025/11/06

Item	★	Part NO.	Description	Q'ty	Item	★	Part NO.	Description	Q'ty	Item	★	Part NO.	Description	Q'ty
1		104158	Frame	1	34		104160	End, Cap	1	67		109910	Bracket, Magazine Bracket	1
2		104106	Screw, SHCS	1	35		104138	Gasket, End Cap	1	68		109911	Bracket, Magazine	1
3		104129	Protector, Rear Frame	1	36		100530	Screw Socket Hd	7	69		109879	Core Tip	1
4		104108	Valve, Energy Control	1	37	★	104169	O-Ring	2	70		109176	End Cover	1
5	★	100332	O-Ring	2	38		104139	Exhaust Deflector	1	71		109175	Top Guide	1
6		104230	Wear Guide	2	39		104163	Casting, Top Guide	1	72		109913	Cover, Magazine	1
7		104125	Sleeve, Cylinder	1	40		104148	Spring, Compression	1	73		100870	Spring Washer	5
8		109618	Cap	1	41		104133	Arm, Upper Contact	1	74		100568	Screw Socket Hd	2
9	★	101931	O-Ring	1	42		104128	Cover, Trip	1	75		109619	Mounting Block	1
10		103357	WASHER, PISTON	1	43		104110	Screw, Special	1	76		109714	Set Screw	1
11		103356	PISTON	1	44		104149	Pin, Spring	2	77		100045	Screw Socket Hd	1
12		104227	WASHER SPECIAL M6	1	45		100980	Disc-Latch Stop	1	78		109620	Mount Brace	1
13	★	104225	Driver	1	46		104119	Latch, Magazine	1	79		109846	Mounting Block	1
14		104122	Bumper Top	1	47		104121	Spring, Compression	1	80		110703	Helical Insert	2
15		101018	Nut M6	4	48		104117	Bushing, Toggle Pin	1	81		104172	Pin Special(Mag,Nut)	1
16	★	100029	O-Ring	1	49		100977	Toggle-Magazine	1	82		104209	Pin Spring	1
17		104124	Ring, Piston	1	50		100090	Roll Pin	1	83		104245	Insert, Threaded	1
18		104112	Assy, Standard Module	1	51		104130	Bushing, Magazine Cover	2	84		110622	Air Bushing	1
19		104143	Arm, Guide Assembly	1	52		104118	Spring, Cover	1	85		110621	Air Fitting	1
20		104165	Pin, Spring	1	53		104162	Pin, Spring	1	86		100015	Screw Socket Hd	4
21		100978	Spring Pin	1	54		104232	Pusher	1	87		109742	Set Screw	1
22	★	104243	Bumper, Lower	1	55		101003	Handle-Pusher	1	88		109881	Cylinder	1
23		104115	Seal, Check	1	56	★	104107	O-Rng	1	89		110527	Tube Fitting	1
24		104127	Bulkhead, Sleeve	1	57		104242	Screw, Special M4x20	1	90		109891	Internal Tooth Lock Washer	1
25		104236	Wearplate	1	58		104120	Sleeve Bracket	1	91		109883	Hex Coupling Nut	2
26		104217	Nose	1	59		104114	Tube, Exhaust	1	92		109888	Hex socket screw	2
27		104137	Plate, Nose	1	60		101834	Spring	1	93		109882	U-Bolt	1
28		104224	Casting, Nose Cover	1	61		101016	Spring, Link	1	94		109889	Hex Nut	2
29		100571	Anchor Block Lock Nut	2	62		104109	Retainer, Spring	1	95		109884	Joint Plate	1
30		100208	Screw Socket Hd	2	63		100220	ROLL PIN 3x32	1	96		109769	Mount Kit	1
31		104173	Pin, Nose	2	64		120143	SEQ6 Trigger Unit	1	97	★	104203	Main Piston Unit	1
32		101673	Adjuster Trip	1	65	★	104176	O-Ring	1	98		109942	90 Degree Elbow 1/4" NPT Male to Female Fitting kits	1
33		104222	Arm Contact	1	66		109902	Assembly, Magazine	1					

SN412S4LM.A01A

Ver : SN412S4LM.010A

This tool is available with 2 actuation systems. Each system requires different trigger and / or valve parts as listed hereunder.  
 Bump Fire actuation: Black Trigger  
 Sequential actuation: Grey/Silver Trigger

MOQ for items in the following categories is 10pcs, order quantities under 10pcs for these items will be adjusted accordingly.  
 (1) Orings – not included in the oring kits (2) Screws, bolts  
 (3) Nuts (4) Pins - roll pin, solid pins  
 (5) Standard washers – not special washers

About EVERWIN



**EVERWIN PNEUMATIC CORP.**  
 No.7, Wugong 7th Road, Wufeng District, Taichung City, 413, Taiwan  
 www.everwinpneumatic.com